

# Evolphin MAM

## Avid Integrations



Automatically import Avid Interplay bins into the Evolphin MAM



Overlay Evolphin on existing Avid Interplay for co-existence between Avid & Adobe



Avoid lock-in by enabling digital teams to collaborate with Avid editors



Sync exports from Media Composer to the Evolphin MAM via Mac Finder or Windows Explorer Plugins

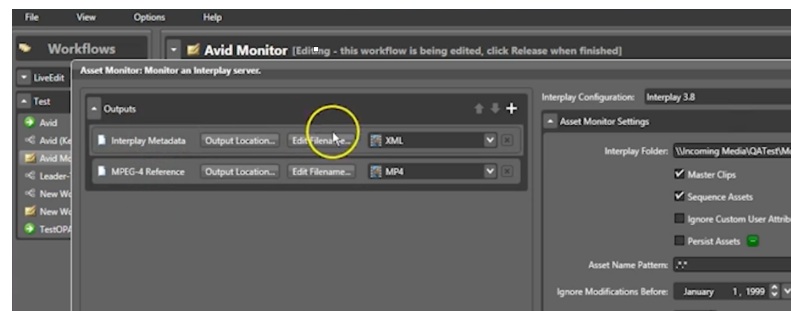
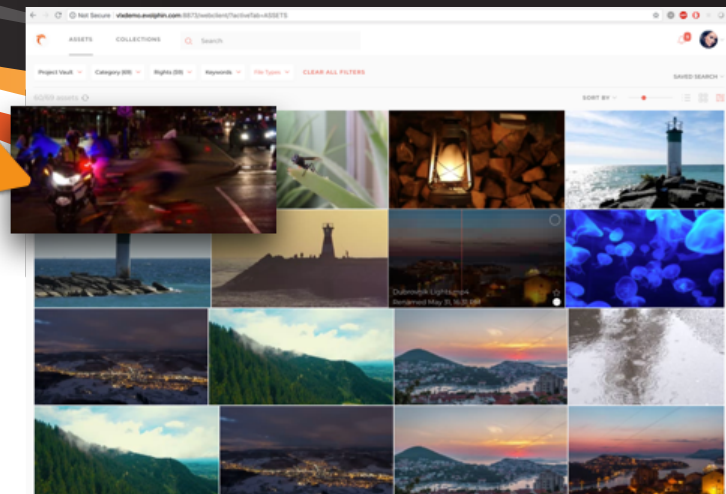
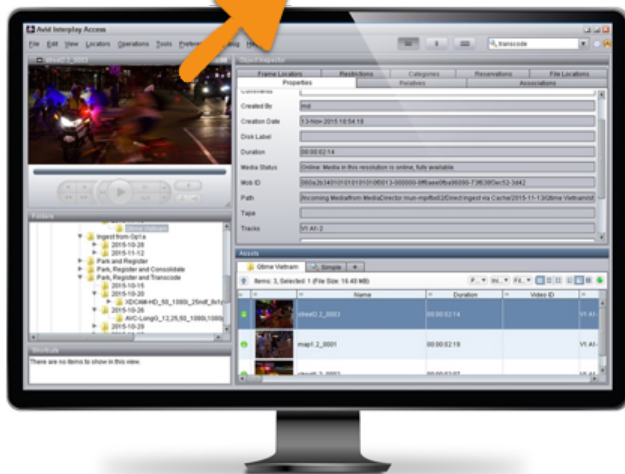


Save on storage by keeping high-res on Avid storage with catalog in the Evolphin MAM



Link/ingest native assets from the Evolphin MAM to Avid apps

Evolphin Data Migrator

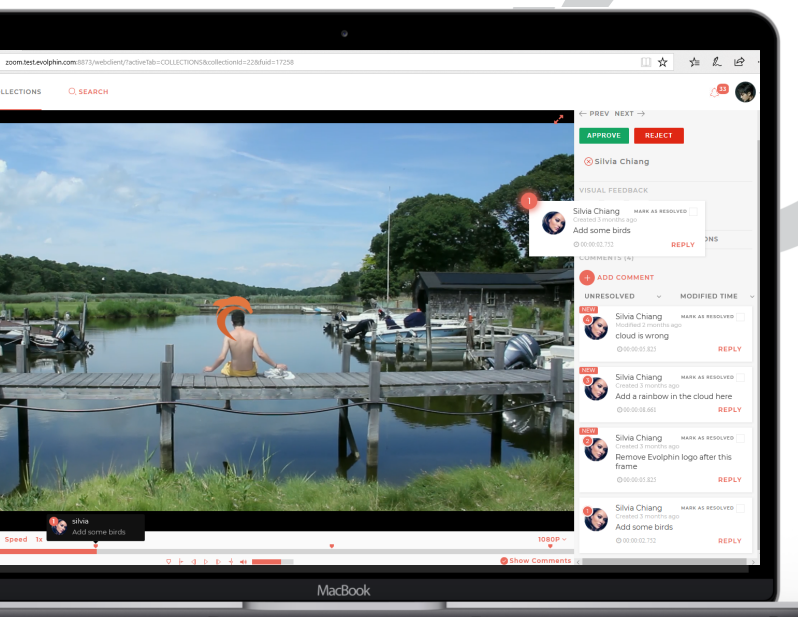


### INTERPLAY IMPORT MODULE

- Ingest high-res videos from Avid Interplay bins to the Evolphin MAM
- Setup custom ingest rules via an easy-to-use web admin UI
- Import Avid custom attributes into Evolphin metadata format on ingest
- Automatically create mezzanine and/or low-res proxies of all high-res videos stored in Avid Interplay

### AVID MEDIA COMPOSER WORKFLOW

- Search & link to content directly from the Zoom Asset Browser via drag-n-drop to Avid Media Composer project bins using AMA Link
- Import footage from Zoom using the Media Composer default DNxHD intermediate codec based ingest
- Export files into the Zoom MAM using Finder or Windows Explorer plugin
- Collaborate with producers/managers directly using Evolphin Web Collections

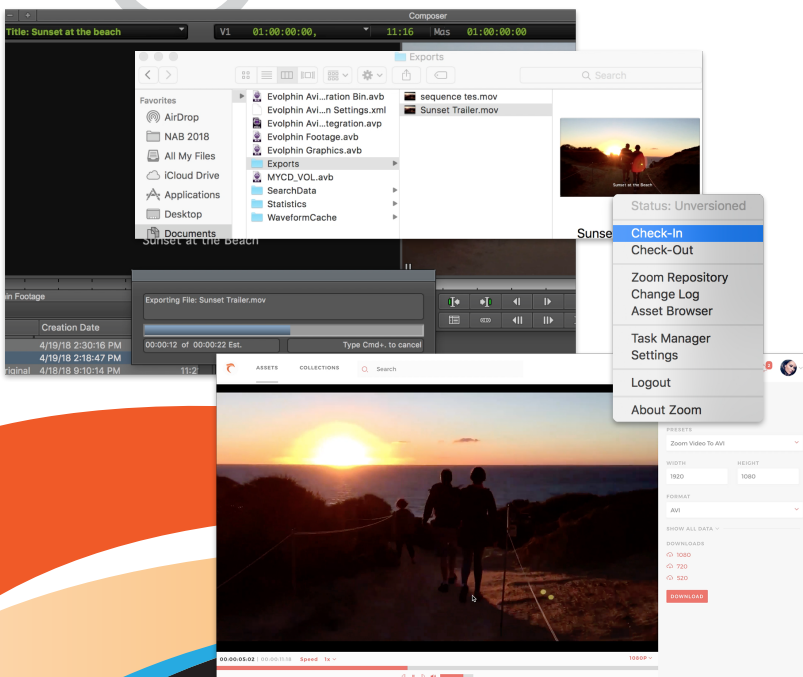


## MAM INTEGRATION

- Enterprise-grade MAM that allows Avid, Adobe CC and other creative apps to work off the same central repository
- Images, Animations, Audio, and Footage all managed in a unified Zoom repository without hardware lock-in
- Metadata logging, search for Avid & non-Avid media managed in a single MAM server
- Powerful Web Apps for timecoded markup, review of exports from Avid Media Composer

## ARCHIVE MANAGEMENT

- Easily move high-res video projects & their dependencies between disk storage and tape/cloud storage
- Search & preview large archived assets before restoring them
- Archive to choice of destinations including SGL, Oracle DIVA, S3, Cloudian, or StorageDNA



## SYSTEM REQUIREMENTS

- Transcode Server: Windows Server 2012+ with minimum Quad core, 6GB RAM
- System requirements are described on our help site: <https://goo.gl/QrHbC4>

## ABOUT EVOLPHIN AND ZOOM

Evolphin Software is the first of its kind in Rich Media Asset Management. Zoom leverages the industry's first high-performance in-memory deduplication of content, allowing users to create, share, and collect insights, and provide rich media to their clients in the fastest way possible. See Zoom in action for a different approach to media workflow management that will make you re-think conventional wisdom with a new generation of products and capabilities. Companies around the globe, covering the Advertising, Broadcasting, Media/Entertainment, Retail, and Healthcare industries, currently deploy Zoom.